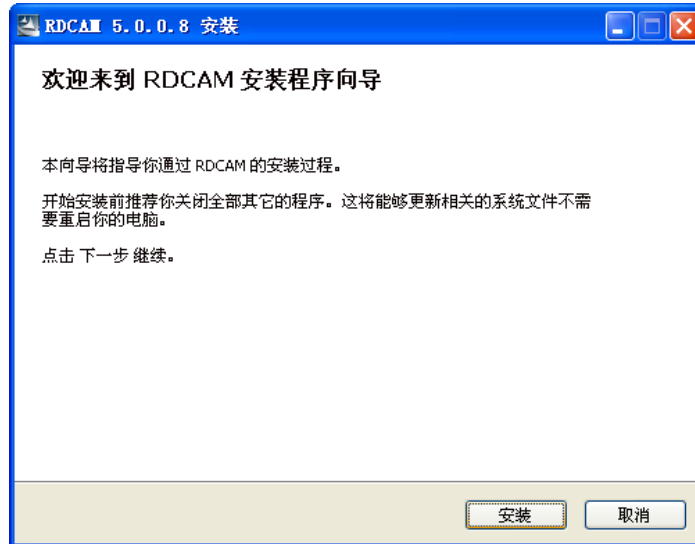


**User's Manual of  
Laser Engraving Cutting Software RDCAM5.0**

# Chapter 1 Software installation

## 1.1 Install steps

- (1) Double-click the RDCAMSetup.exe under the installation directory, the following dialog box appears:



- (2) Click 【Install】 , when extract copy is to be completed, the installation main interface appears:



## 1.2 Installation settings

The installer can choose different installation content.

- 1> Install motherboard USB driver.
- 2> According to the different customer application needs and the habit of using to

select the type of software

- a. Stand-alone software LaserWork.
- b. The software that plug-ins to CorelDraw. Support the version from Coreldraw11 to X5.
- c. The software that plug-ins to AutoCad. Support the version from 2004 to 2010.
- d. The software that plug-ins to Cadian.

3> Choose a different installation languages

At present, it support Simplified Chinese, Traditional Chinese, English and the custom language type.

4> Select the software matches the motherboard

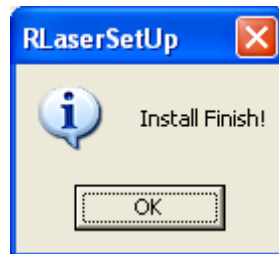
The motherboard can support both motherboards have RDLC320 and RDLC430. Because the function of the two motherboard have different places, please install the corresponding software with the motherboard. Otherwise, it does not work.

5> Demo version installation

According to the type of software installation, the installation language, the choice of motherboard generate different versions of the DEMO Software.

## 1.3 Installation

Choose the type of software, installation language and the appropriate motherboard. Click **【Install/安装】** to install the software. After installation is complete, the following dialog box appears to prompt the user that the software has been installed successfully.



## 1.4 Exit

After installing the installation needed. Click **【Exit/退出】** to end the installation process (Because of the possible need to use several installation, so the installation dialog does not automatically exit).

## 1.5 Other matters

1> When installing the plug-in software, the software that has been articulated should be shut down. After installation, restart the software.

2> The regular version and the DEMO version of the plug-in software is covered by each other.

3> In the default installation path, the normal version and the DEMO version of the independent software and different types of independent software motherboard with each other.

For the same time to install two versions, select the **【Locate install path/定位安装路径】**. The regular version and the Demo version should be installed in the different location.

In addition, need to the appropriate software installation location, manually add a desktop shortcut for the software.

4> Modify the information of manufacturers

In the package, in addition to RDCAMSetup, there are four text files.

Info\_Sche、Info\_Tche、Info\_En、Info\_Other, the four files correspond to the software information of manufacturers that be displayed in Simplified Chinese, Traditional Chinese, English and the custom language. If the four text is modified, manufacturer information also will be installed when the program was installed.

Open the text that should be modify, an example in Simplified Chinese:

0 = Company Name:

1 = . . . (Fill in company name here)

And so on, the company information in other languages is the same set.

## Chapter 2 install USB drive

USB drives can be manually installed, can also be installed directly in the RDCAM program automatically installs.

Under normal circumstances, manual installation and automatic installation is exactly the same, and the use of automatic installation was recommended. However, if automatic installation was not successful, try to manually install the USB driver. If manual installation still fails and confirm the availability of USB drive is the right circumstances, there may be some kind of operating system failure can not be expected. So you should to re-install the operating system, then install the drivers.

The current USB drive support to be used in the operating system WIN2K ,WINXP and Win 7.

## 2.1 Automatically install the USB driver

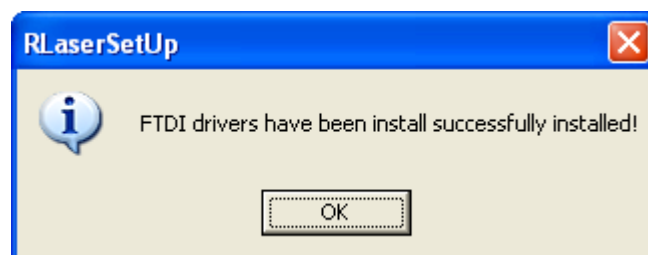
RDLA board will be charged, waiting for the end of the motherboard reset. The USB cable that was connected with the port of PC motherboard should be plugged into the available USB port on the host. Operating system will prompt the discovery of new hardware and install the driver asked, can not process the message.

Run the installation program RDCAM. Click 【Install Driver/驱动安装】 to install the USB drives.

If there are hardware installation prompts, choose continue until the installation is complete.



After installation, the following dialog box appears, indicating that the USB driver have been successfully installed..

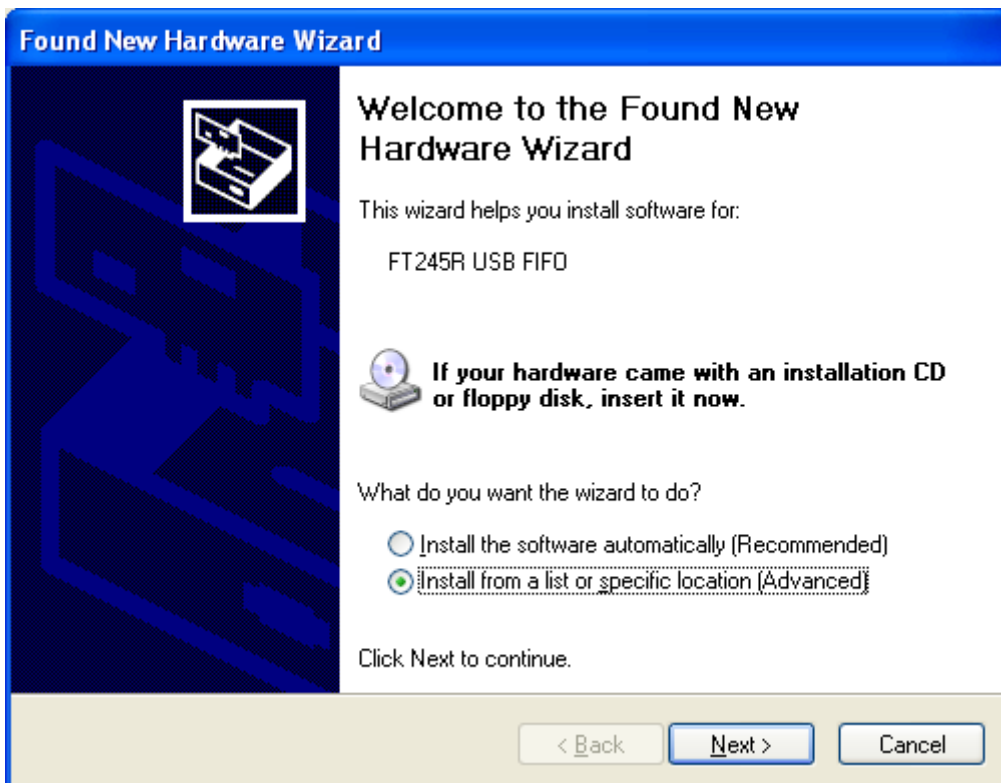


## 2.2 Manually install the USB driver

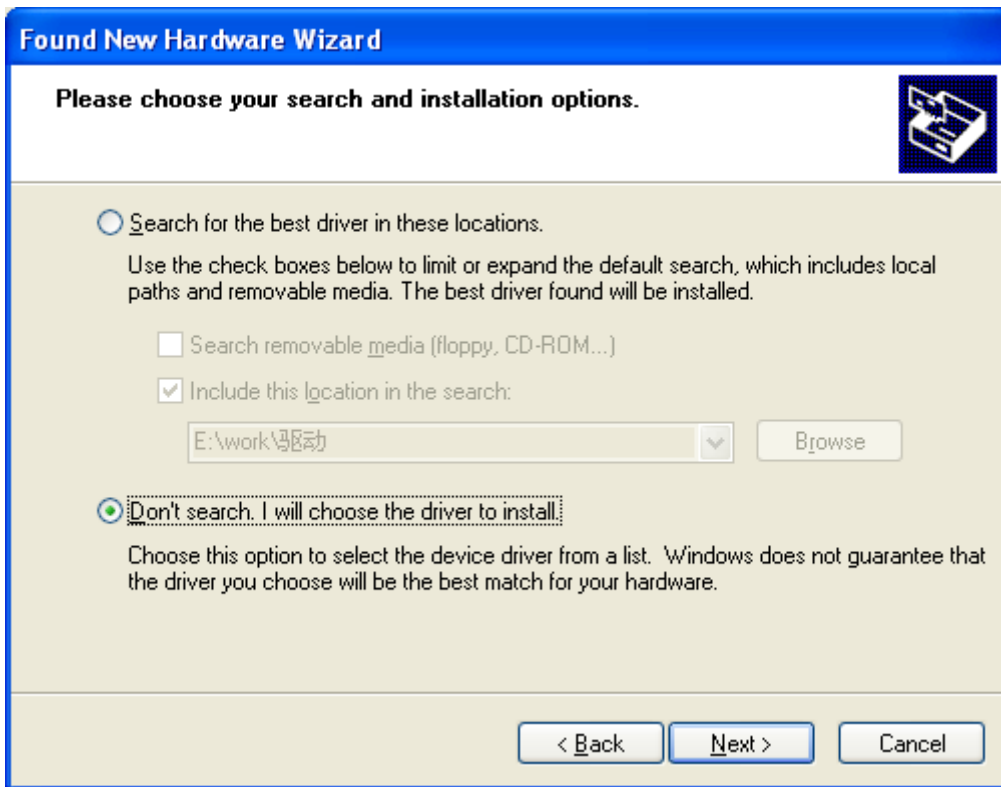
When the USB cable to the host, the operating system will be prompted to find new hardware and install the driver required.



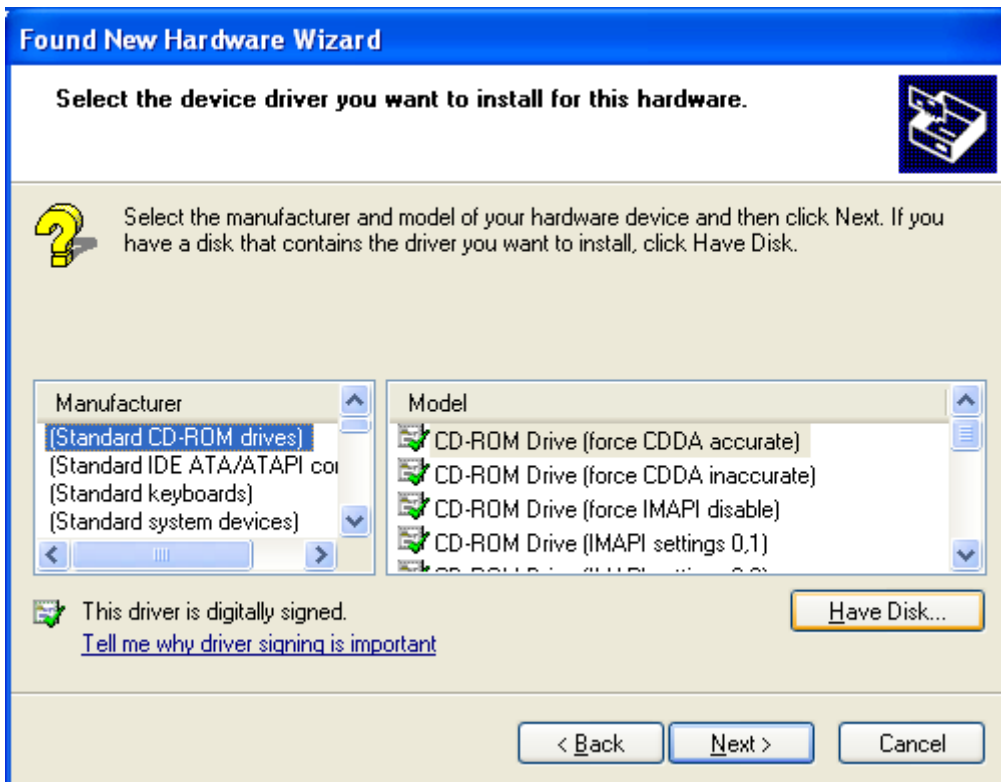
Select "Install from a list or specific location[Advanced]" and then select Next.



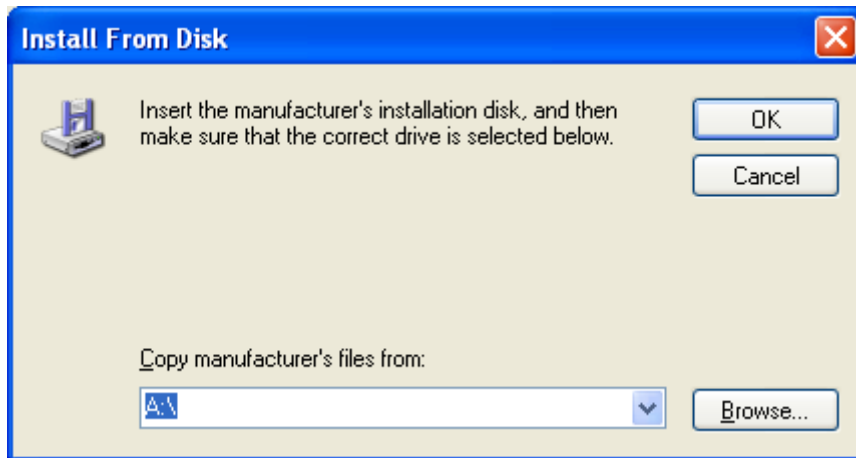
Select "Install from a list or specific location" and then select Next.



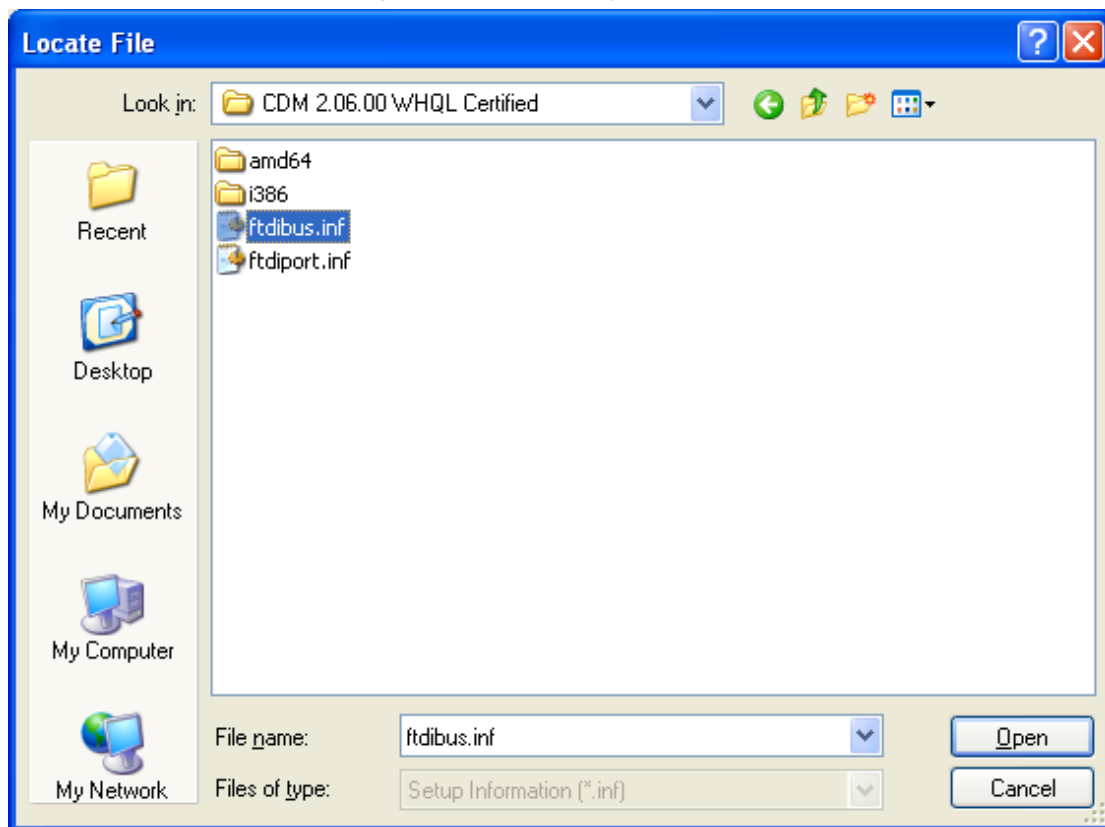
Select "Do not search, I will choose the driver to install" and then select Next.



Click button “Have Disk”.

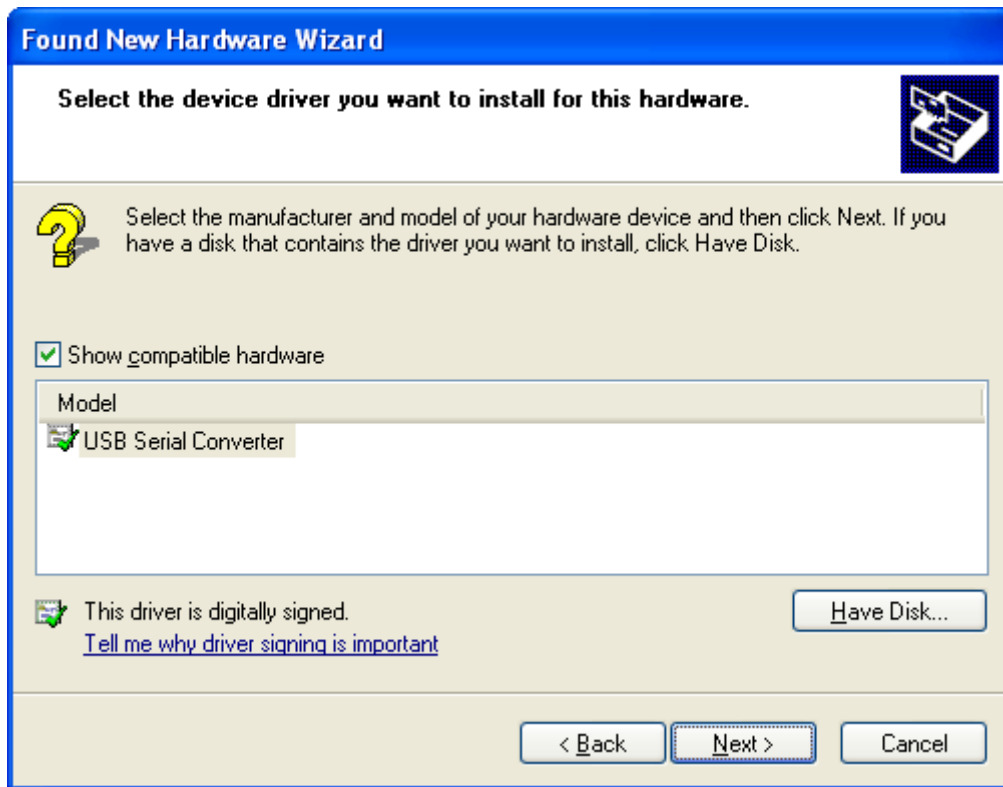


Select the “Browse”, navigate to the directory where the folder drive.

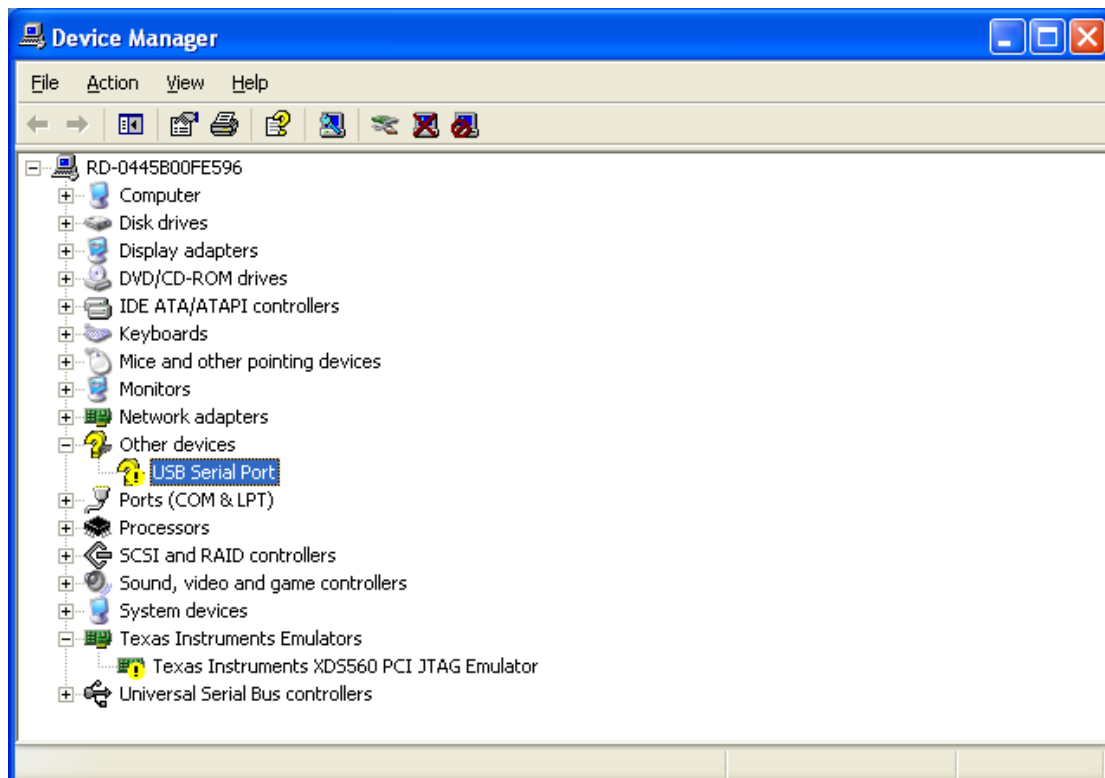


Select the file ftdibus.inf, then OK, and in the “Found New Hardware Wizard” dialog box, choose “Next”.





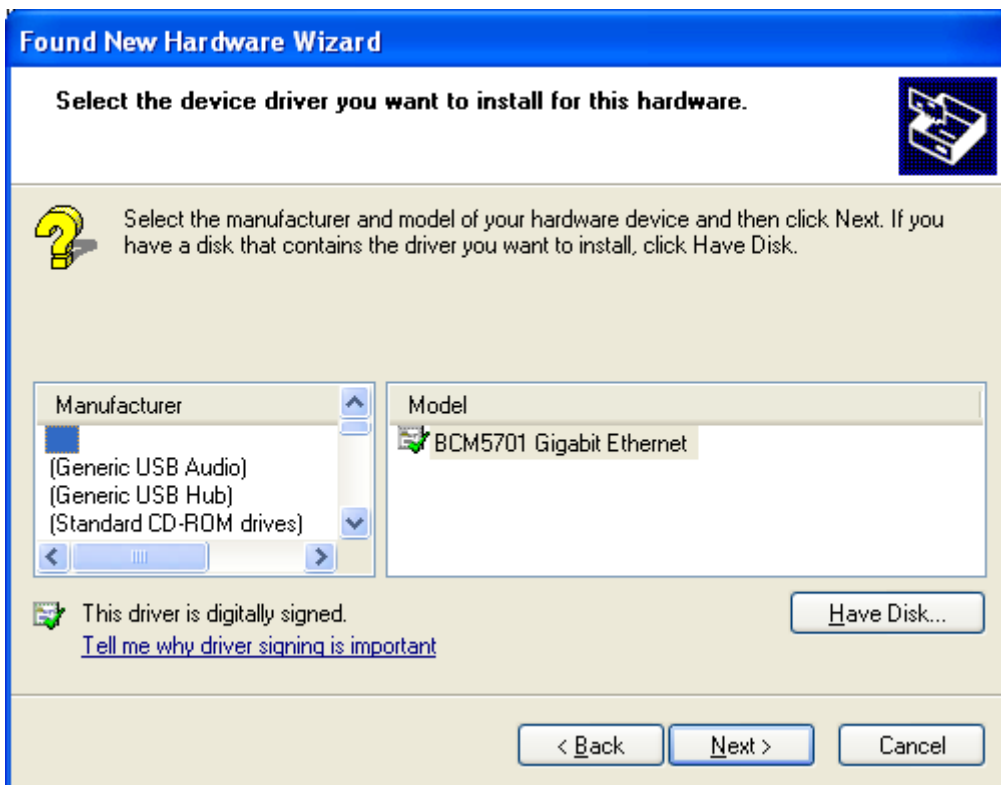
After the installation process, within the Device Manger will show "USB Serial Port".



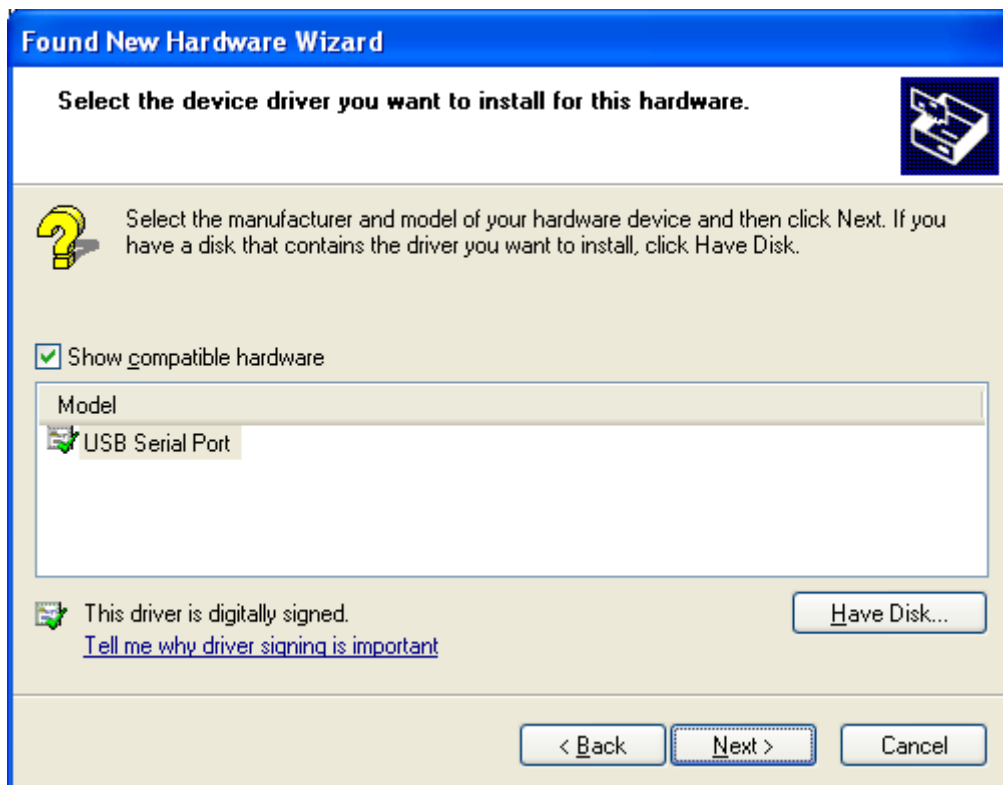
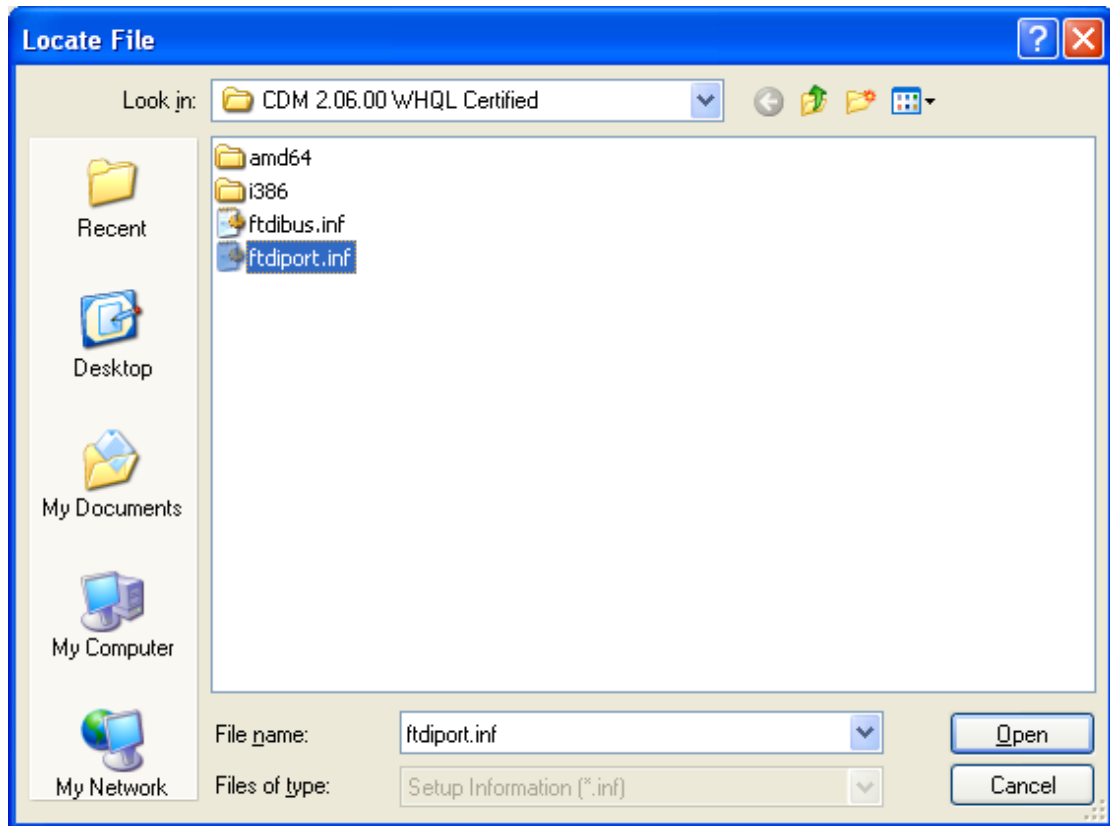
Operating system will still be prompted to find new hardware wizard.



Select “Install from a list or specific location [Advanced]” and then select “Next”. The remaining operation is consistent with the foregoing. Until the following dialog box appears.

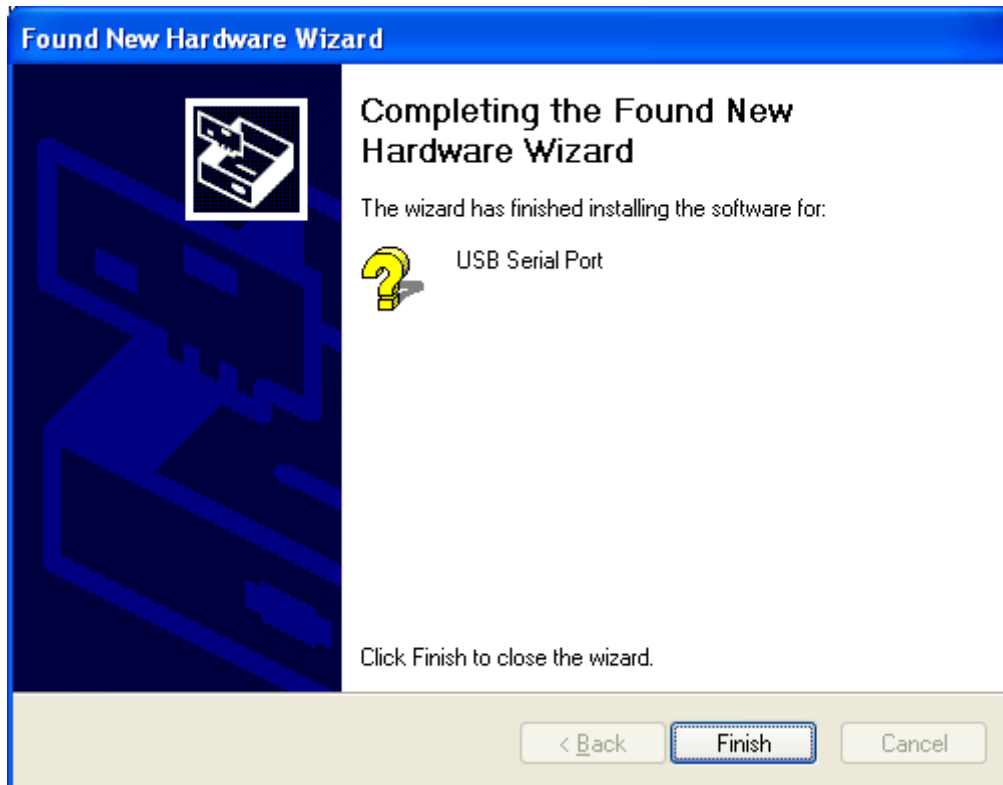


Select "Have Disk", and manually navigate to the driver to the driver location, select the file ftdiport.inf.

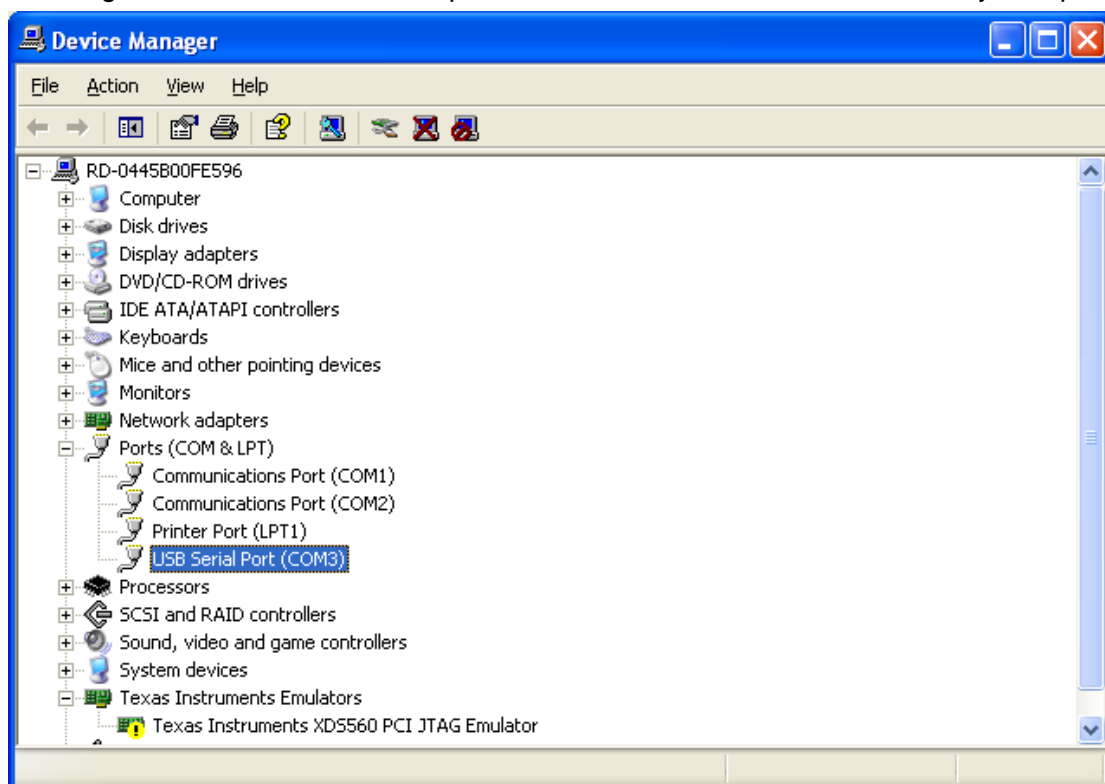


Then select "Next", the operating system will automatically install the driver.

After installation, the prompt window appears.



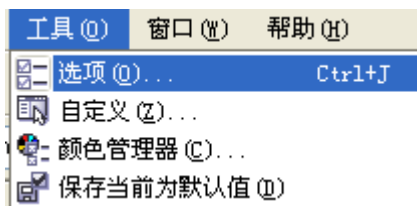
View Device Manager once again. The port number of the COM appears in the following of the "USB Serial Port". Specific values relate with the status of the system port.



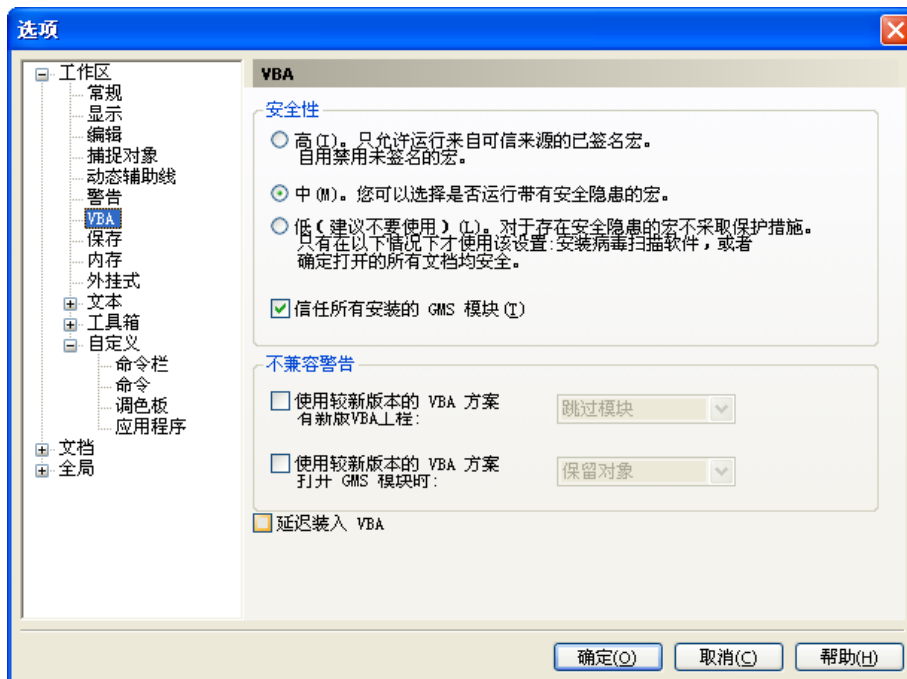
## Chapter 3 The plug-in of CorelDraw installed

Plug-in software support the version from CorelDraw11 to X5, but some simplified versions of CorelDraw is not supported. Here to the installation of CorelDraw12 as an example to introduce the installation process of plug-in software. If not specified, it is referring to CorelDraw12.

Before installing the plug-in software to run CorelDraw.



Select 【工具】->【选项】

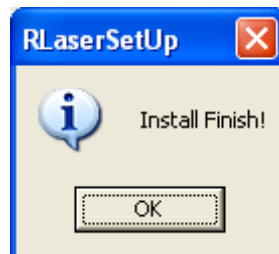


In the pop-up dialog box, select VBA, on the right do not check the “delay load VBA”, then OK, and exit the application CorelDraw.

Run the program of installation, choose “Type/类型” to “CorelDraw\_Laser”, then click 【Install/安装】.




The installer will automatically install the plug-in software to the all versions of CorelDraw RDCAM that are installed on the operating system and pop-up dialog box.

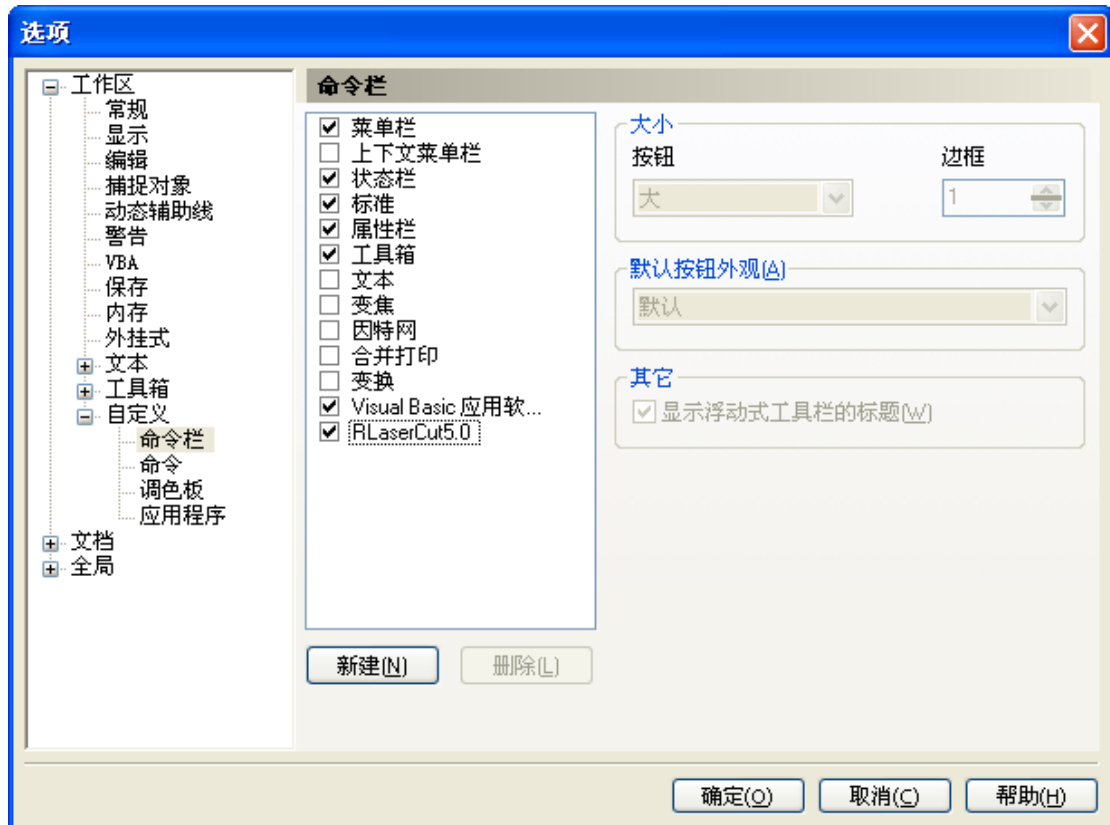


For some versions of CorelDraw (such as green version) may not automatically navigate to the locate where the CorelDraw is installed on. Only need to check “Locate install path/定位安装路径” on the installation software, and then manually browse to navigate the folder location to the root of CorelDraw software where the plug-in program should be installed on.

Exit the installation program, and run CorelDraw.

Toolbar in the CorelDraw interface will appear .

If the button does not appear, you should select **【工具】** -> **【选项】** in the menu.



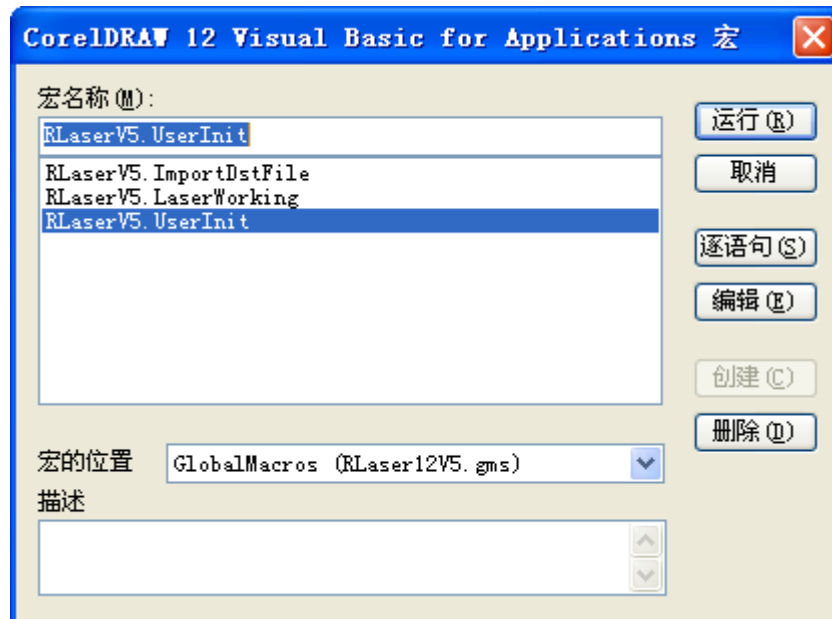
On the left select the “command bar” and then check “Visual Basic applications”, and select “OK”.



, this tool bar will appear in the software, select the first button



If the toolbar does not appear, reinstall the software CorelDraw.



In the “macro location” select “GlobalMacros(RLaser12V5.gms)”.

And the “Macro name” choose the RLaserV5.UserInit. And then “Run”.

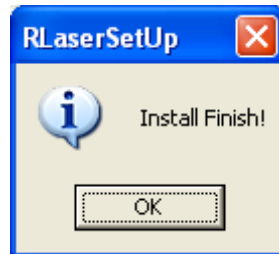
## Chapter 4 The plug-in of AutoCad installed

AutoCad plug-ins can be used to AutoCad2004-2010 non-simplified version. Here to the installation of AutoCad2004 as an example to introduce the installation process of plug-in. If not specified, it is referring to AutoCad2004. Close all running AutoCad programs before AutoCad plug-in installed.

Run Setup. Select “AutoCad Laser” as The “Type/类型”, and then click **【install/安装】**.



Setup will automatically install the RDCAM plug-in software to all versions of AutoCad that were installed on the operating system and pop-up dialog box.



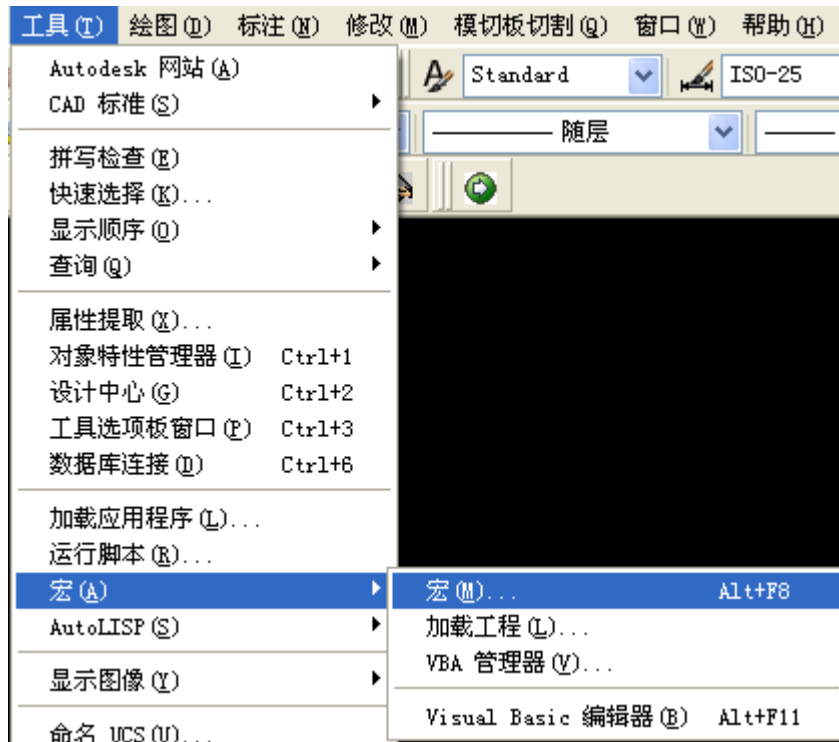
For some vesions of AutoCad(such as green version) may not navigate to the locate where the AutoCad was installed on. Only need to check “Locate install path/定位安装路径” on the installation software, and then manually browse to navigate the folder location to the root of AutoCad software where the plug-in program should be installed on.

Exit the installation program, and run AutoCad.

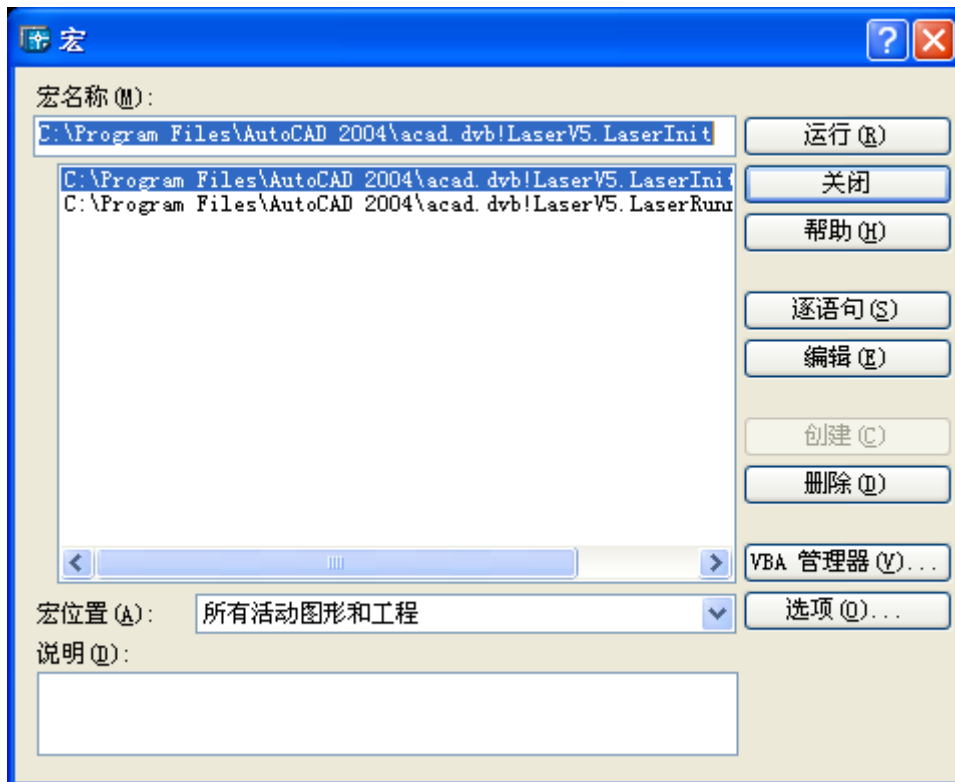
Toolbar interface in AutoCad will appear 

If the button does not appear, select **【工具】 -> 【宏】 (A)->宏(M)** in the menu.





If you can not find it in the menu, it is because the version of AutoCad may not support the plug-in. Please re-install a full version of AutoCad.

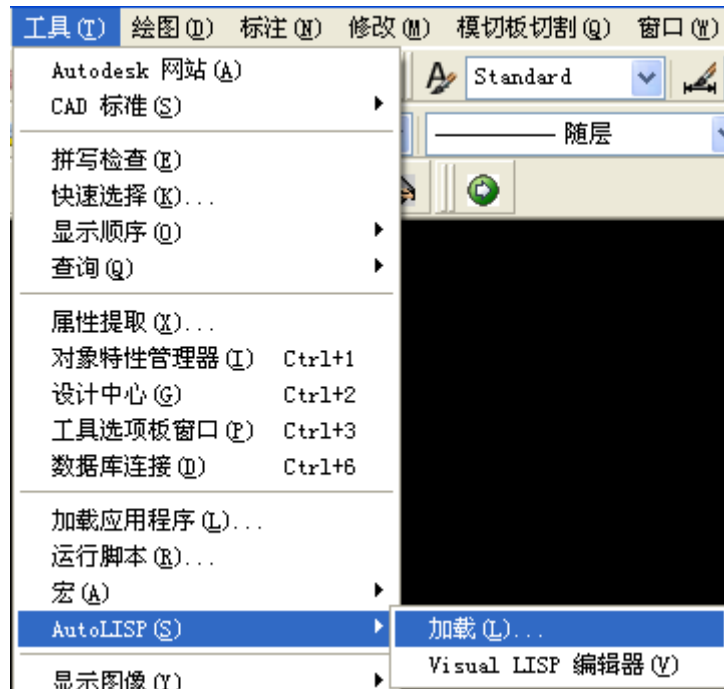


In the pop-up dialog box, select LaserInit, and run.

The plug-in toolbar can occur if you select this option, but when you close AutoCad and then open the AutoCad software again. But also do not see the toolbar. Then it is possible that your computer is infected with a virus. You must manually to define the boot loader works of AutoCad, or you can re-check for viruses or reinstall the operating system

and AutoCad software.

Manual process of loading plug-in as follows, select the menu 【工具】->AutoLISP->加载.



In the dialog box, you should to choose the “Content” button that was under the “Start Group”.



Select "Add" button in the pop-up dialog box. In the AutoCad directory, manually locate and select acad.dvb,acad.lsp. And loading these two files.



Adding the file, close the dialog box, and then close the AutoCad. You can see the plug-in toolbar when you open the AutoCad again.

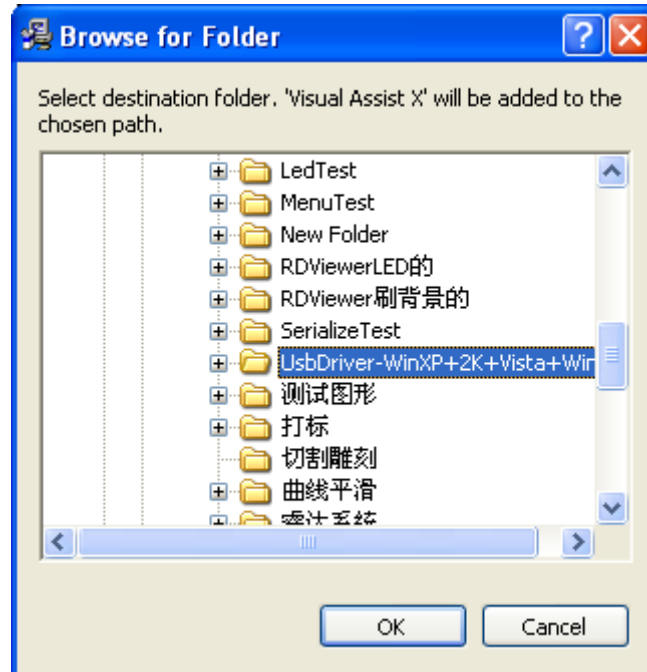
## Chapter 4 The plug-in of Cadian installed

Cadian plug-in are now available for the non-simplified of Cadian2010. The other version is not tested. When Cadian was installed, you should close the running Cadian procedures.

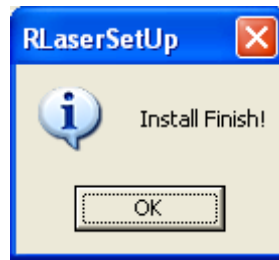
Run Setup. Select “CaDian Laser” as the “Type/类型”. And then click 【install/安装】.



As CaDian is green software, installation program can not automatically find the installation directory where the need to manually locate the installation path. Select the CaDian installation folder, and click “OK” button.



After installation is complete, the following dialog box appears.



Exit the installation program, and run CaDian.